

1. Remove the nut holding the factory top hat on.



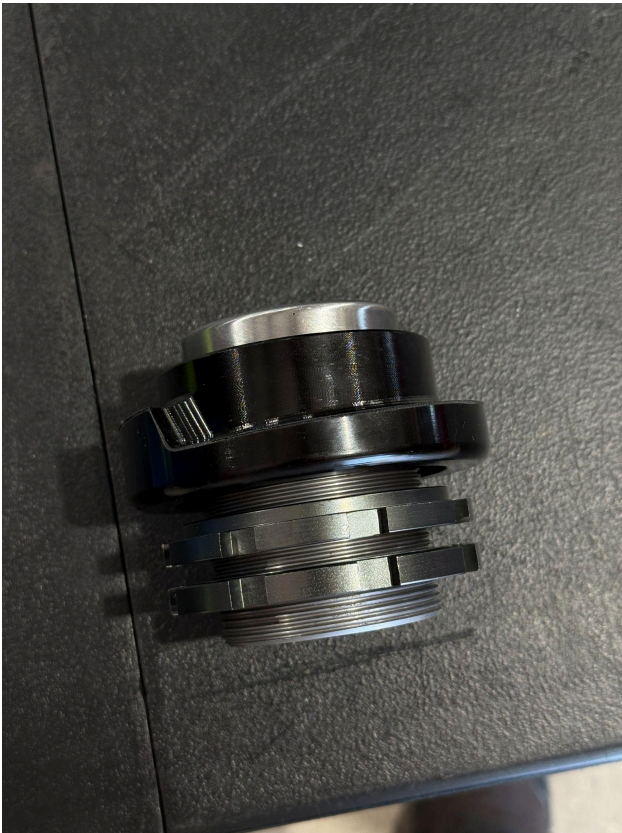
2. Remove the upper spring assembly and top hat.



3. Press off the lower spring perch and remove it.



4. Assemble the TRP Coilover Sleeve Perch and verify that the rings are in the correct order.





5. Lube the inner ring before installation.



6. Slide on the TRP Coilover Sleeve Perch. (this can be done by hand)



7. Make sure to reinstall the upper shock cap if it comes off.



8. Install the top hat washer before reassembling the strut.



10. Simply work backwards and reassemble the strut. Adjust the coilovers as needed for the desired ride height.